

Road map to Charlottenberg
Dommevägen 106-0
231 96 Trelleborg
(The red dot)

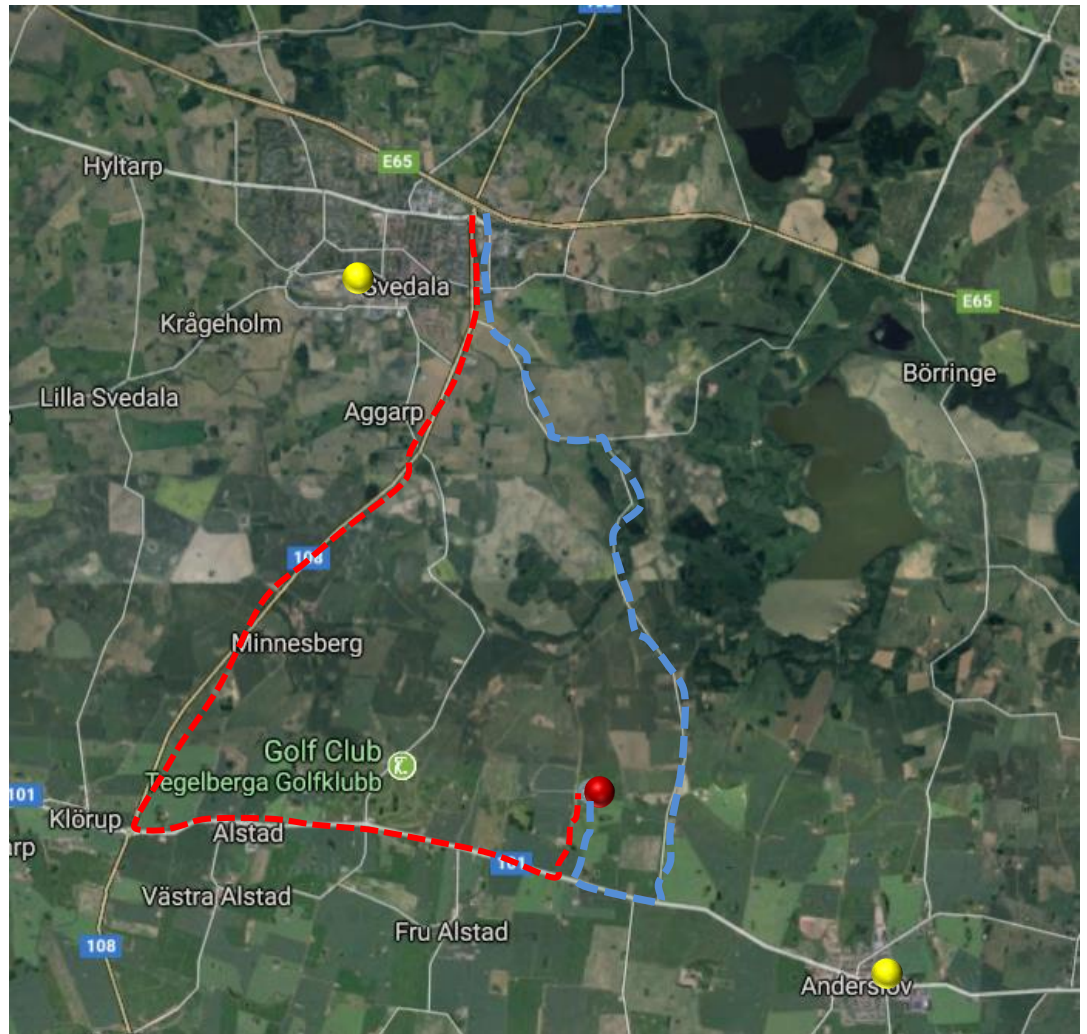
E65 direction Ystad, get off at Svedala C, in the round about turn left towards Trelleborg

With horses: road 108, in the round about turn left, towards Anderslöv. (The red line)

Without horses (5 min faster, but more turns):
After crossing the railroad turn left towards Ugglarp.
(The blue line)

The 2 yellow dots are ICA. The one in Svedala is a big one, the one in Anderslöv is small.

Systembolaget in Svedala, close at 2 pm on Saturdays, 6 pm mon-fri.



Charlottenberg
Dommevägen 106-0
231 96 Trelleborg

Kathrine mobile
+45 29915089

Lasse mobile
0708 421 888



Dommevägen:
Here you turn left, coming from
108, the red line.
(Don't turn left at the first sign
to Domme.)

Here you turn right, coming
from Uglarp , the blue line

